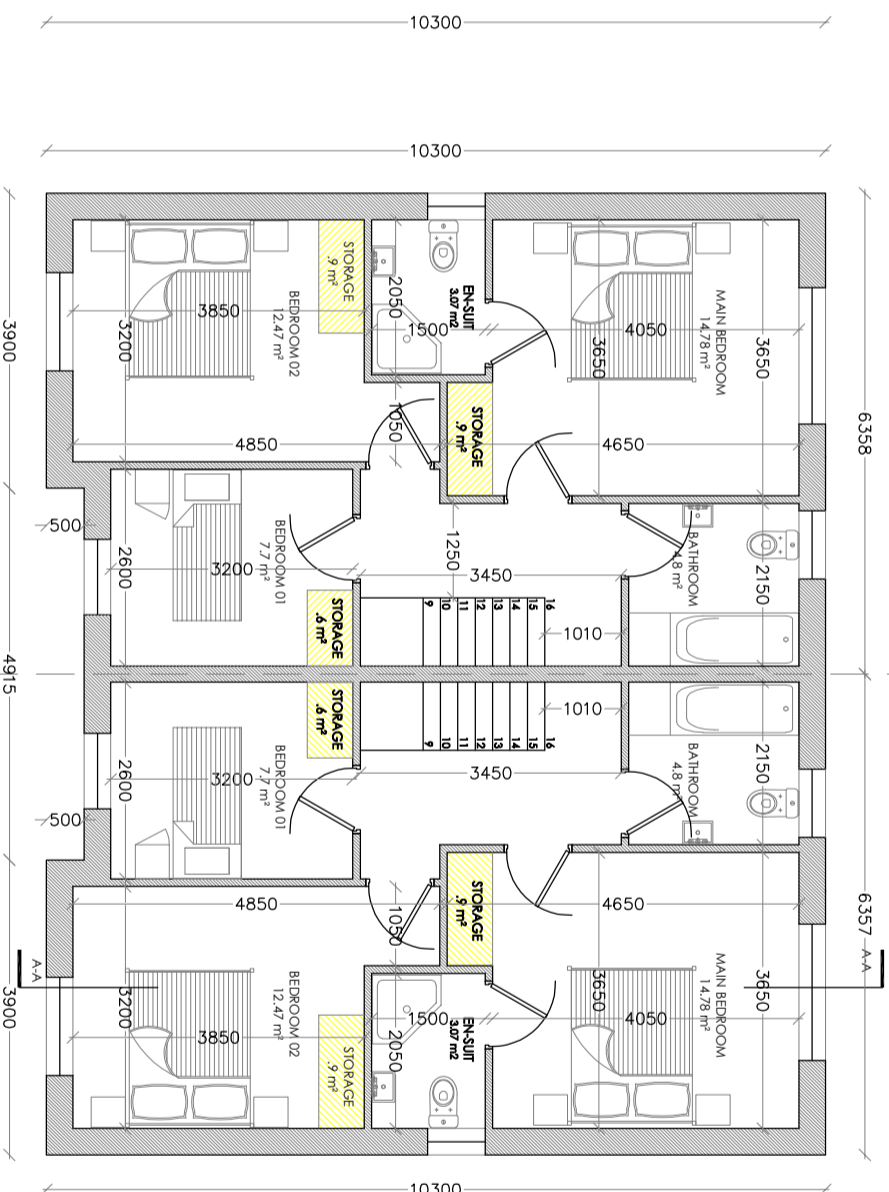
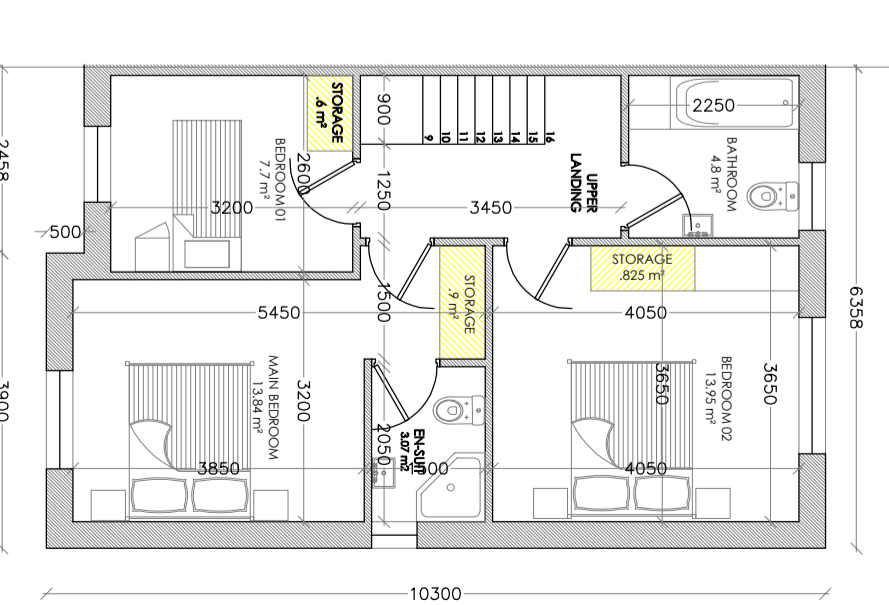


Proposed Ground Floor Plan - Type 3A
SCALE: 1:100 @ A3



Proposed First Floor Plan - Type 3A - Option 1 - Master Bedroom to rear
SCALE: 1:100 @ A3



Proposed First Floor Plan - Type 3A - Option 2 - Master Bedroom to front
SCALE: 1:100 @ A3

SPACE PROVISION: DOEHLG Guidelines compliance

| HOUSE TYPE 03A - Option 1 | | DWELLING TYPE: 3 BED / 5 PERSON 2 STOREY | | | |
|------------------------------|-------------------------------|--|-------------------|--------------|-------------|
| TARGET GROSS FLOOR AREA (m²) | MINIMUM MAIN LIVING ROOM (m²) | AGGREGATE LIVING AREA (m²) | BEDROOM AREA (m²) | STORAGE (m²) | |
| GUIDELINE | 92 | 13 | 34 | 32 | 5 |
| ACHIEVED | 110.4 | 15.27 | 36.57 | 34.9 | 6.13 |

| ROOM STANDARDS: DOEHLG Guidelines compliance | | | | | |
|--|-----------------------|-----------------|--------------|------------|------------|
| BEDROOM TYPE | DOEHLG GUIDELINE (m²) | MAIN BEDROOM 01 | BEDROOM 02 | BEDROOM 03 | BEDROOM 04 |
| SINGLE BEDROOM | 7.1 | - | - | 7.7 | - |
| DOUBLE BEDROOM | 11.4 | - | 12.47 | - | - |
| MAIN BEDROOM | 13 | 14.78 | - | - | - |

| LIVING ROOM WIDTHS : DOEHLG Guidelines compliance | | | | |
|---|----------------------|-------------------|--|--|
| HOUSE TYPE | DOEHLG GUIDELINE (m) | STANDARD ACHIEVED | | |
| 1 BED APT/HOUSE | 3.3 | - | | |
| 2 BEDROOM HOUSE | 3.6 | - | | |
| 3 BEDROOM HOUSE OR MORE | 3.8 | 3.8 | | |

| BEDROOM WIDTHS: DOEHLG Guidelines compliance | | | | | |
|--|----------------------|-----------------|------------|------------|------------|
| BEDROOM TYPE | DOEHLG GUIDELINE (m) | MAIN BEDROOM 01 | BEDROOM 02 | BEDROOM 03 | BEDROOM 04 |
| SINGLE BEDROOM | 2.1 | - | - | 2.6 | - |
| DOUBLE BEDROOM | 2.8 | 3.65 | 3.2 | - | - |

SPACE PROVISION: DOEHLG Guidelines compliance

| HOUSE TYPE 03A - Option 2 | | DWELLING TYPE: 3 BED / 5 PERSON 2 STOREY | | | |
|------------------------------|-------------------------------|--|-------------------|--------------|-------------|
| TARGET GROSS FLOOR AREA (m²) | MINIMUM MAIN LIVING ROOM (m²) | AGGREGATE LIVING AREA (m²) | BEDROOM AREA (m²) | STORAGE (m²) | |
| GUIDELINE | 92 | 13 | 34 | 32 | 5 |
| ACHIEVED | 110.4 | 15.27 | 36.57 | 35.5 | 6.06 |

| ROOM STANDARDS: DOEHLG Guidelines compliance | | | | | |
|--|-----------------------|-----------------|--------------|------------|------------|
| BEDROOM TYPE | DOEHLG GUIDELINE (m²) | MAIN BEDROOM 01 | BEDROOM 02 | BEDROOM 03 | BEDROOM 04 |
| SINGLE BEDROOM | 7.1 | - | - | 7.7 | - |
| DOUBLE BEDROOM | 11.4 | - | 13.95 | - | - |
| MAIN BEDROOM | 13 | 13.84 | - | - | - |

| LIVING ROOM WIDTHS : DOEHLG Guidelines compliance | | | | |
|---|----------------------|-------------------|--|--|
| HOUSE TYPE | DOEHLG GUIDELINE (m) | STANDARD ACHIEVED | | |
| 1 BED APT/HOUSE | 3.3 | - | | |
| 2 BEDROOM HOUSE | 3.6 | - | | |
| 3 BEDROOM HOUSE OR MORE | 3.8 | 3.8 | | |

| BEDROOM WIDTHS: DOEHLG Guidelines compliance | | | | | |
|--|----------------------|-----------------|-------------|------------|------------|
| BEDROOM TYPE | DOEHLG GUIDELINE (m) | MAIN BEDROOM 01 | BEDROOM 02 | BEDROOM 03 | BEDROOM 04 |
| SINGLE BEDROOM | 2.1 | - | - | 2.6 | - |
| DOUBLE BEDROOM | 2.8 | 3.2 | 3.65 | - | - |

| Revision | Description | Date |
|----------|-------------|------|
| | | |

PLANNING

Status: PLANNING
 Project: MULTI UNIT RESIDENTIAL DEVELOPMENT
 Client: LONGVIEW ESTATES LTD.
 Address: LAHARDANE, BALLYVOLANE, CO. CORK.
 Date: 08/11/19 Scale: AS SHOWN
 Drawn By: PC Checked By: MC Approved By: PH



THIS DRAWING IS THE EXCLUSIVE PROPERTY OF HORGAN CARROLL AND SHALL REMAIN THE PROPERTY OF HORGAN CARROLL WITHOUT WRITTEN CONSENT FROM THE OFFICE (S) A VOUCHER OF ANY KIND IS NOT VALID. CONTRACTORS TO CHECK AND SHALL REPORT ANY DISCREPANCIES OR OMISSIONS TO THIS OFFICE BEFORE START OF WORK & DURING THE CONSTRUCTION FROM THIS DRAWING - DIMENSIONS SHOWN SHALL TAKE PRECEDENCE OVER THIS DRAWING.

Drawing Number: **17-002-P-703**
 Drawing Title: **HOUSE TYPE 03A - 3 BED PLANS**
 021 4630110 • info@horgancorroll.ie • www.horgancorroll.ie
 3 Walter's Edge, Riverside way, Mallow, Co. Cork, P25 A033

 Rev: 1